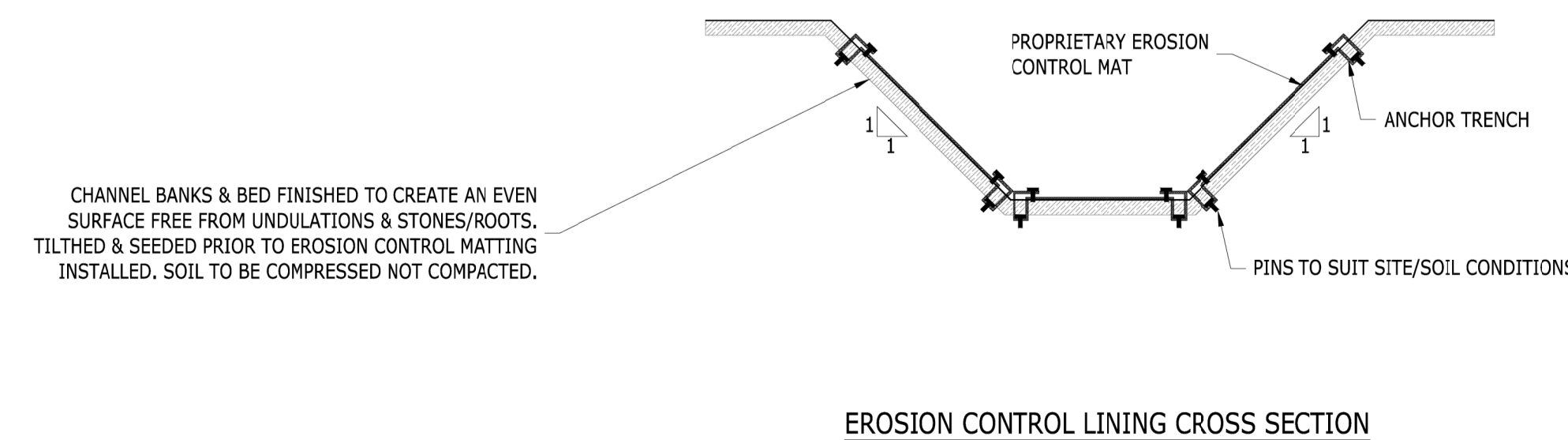
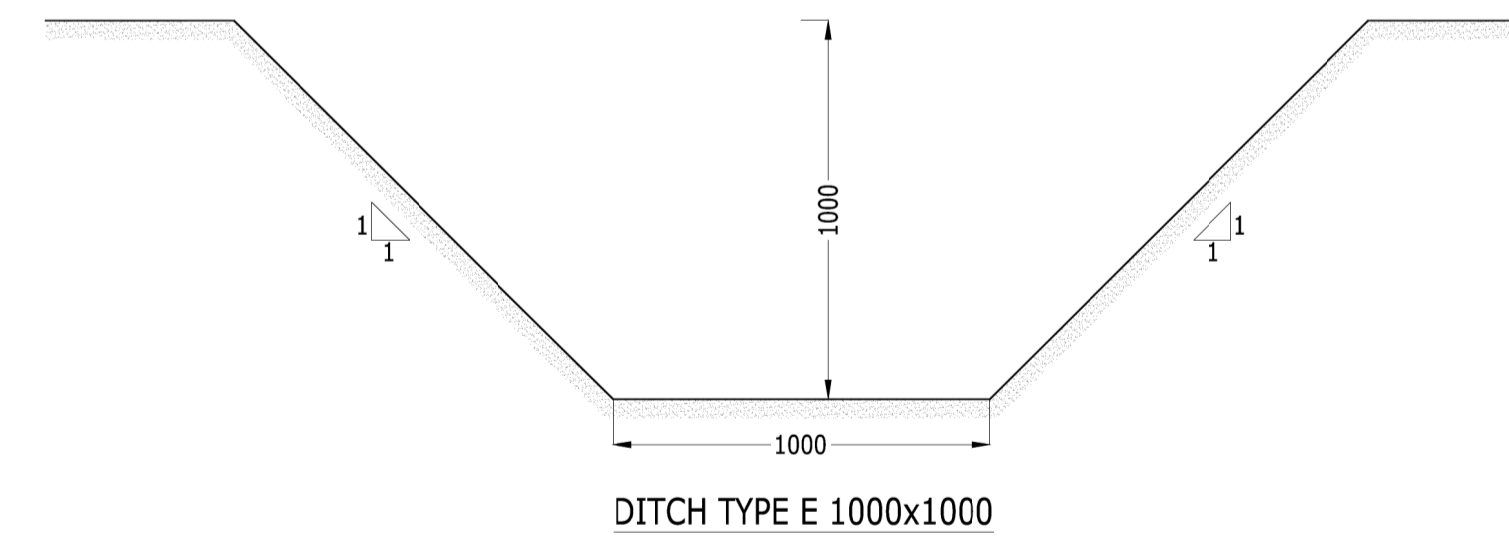
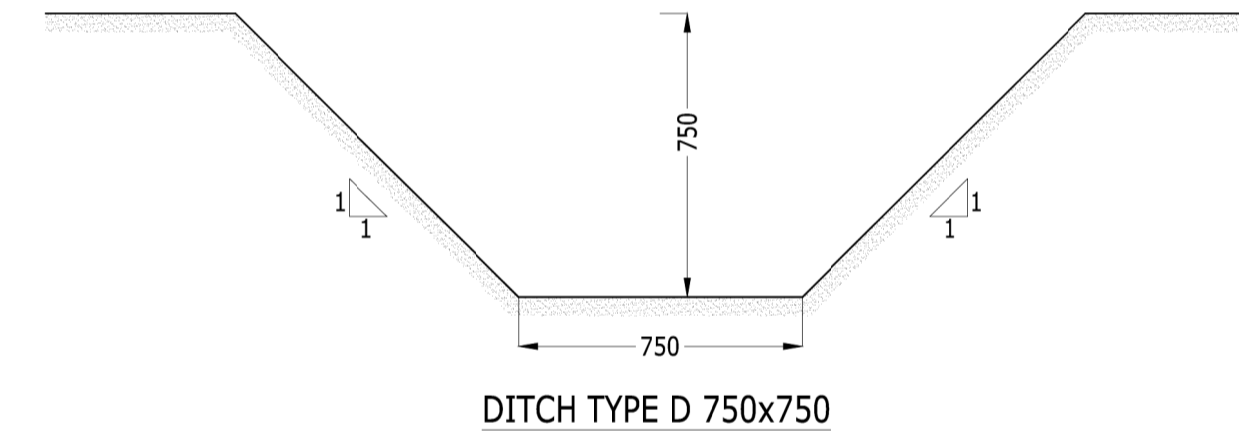
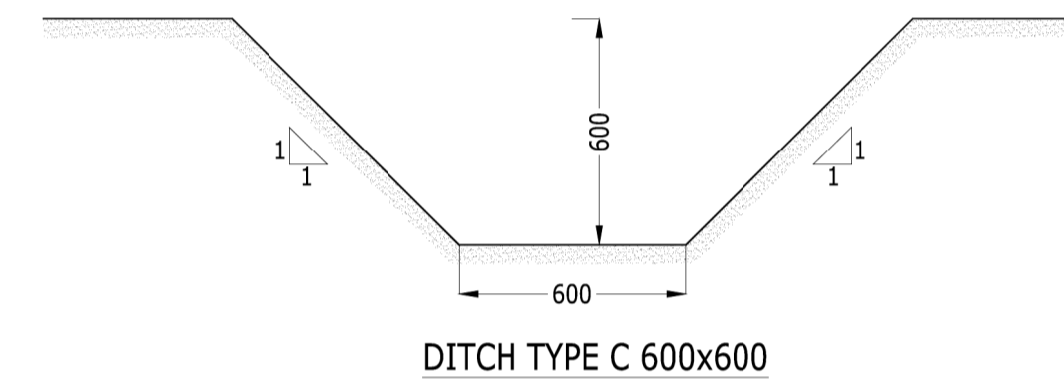
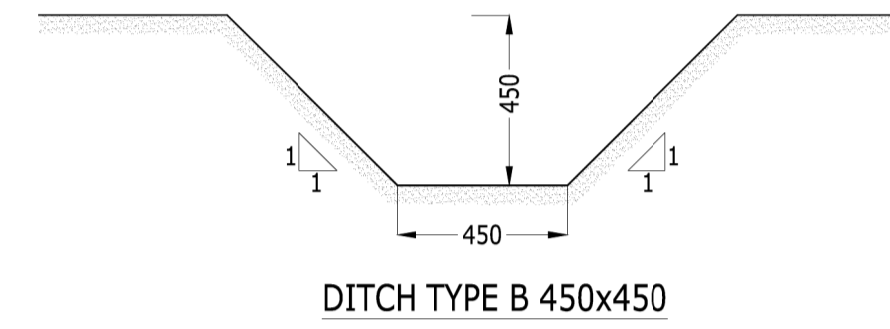
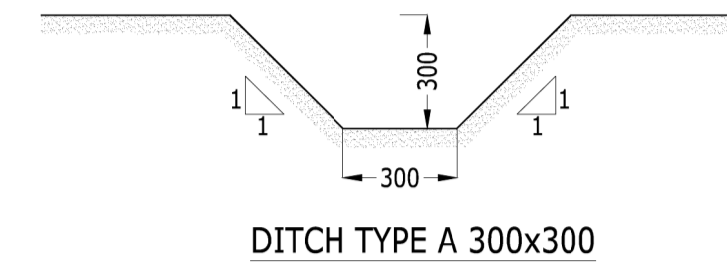
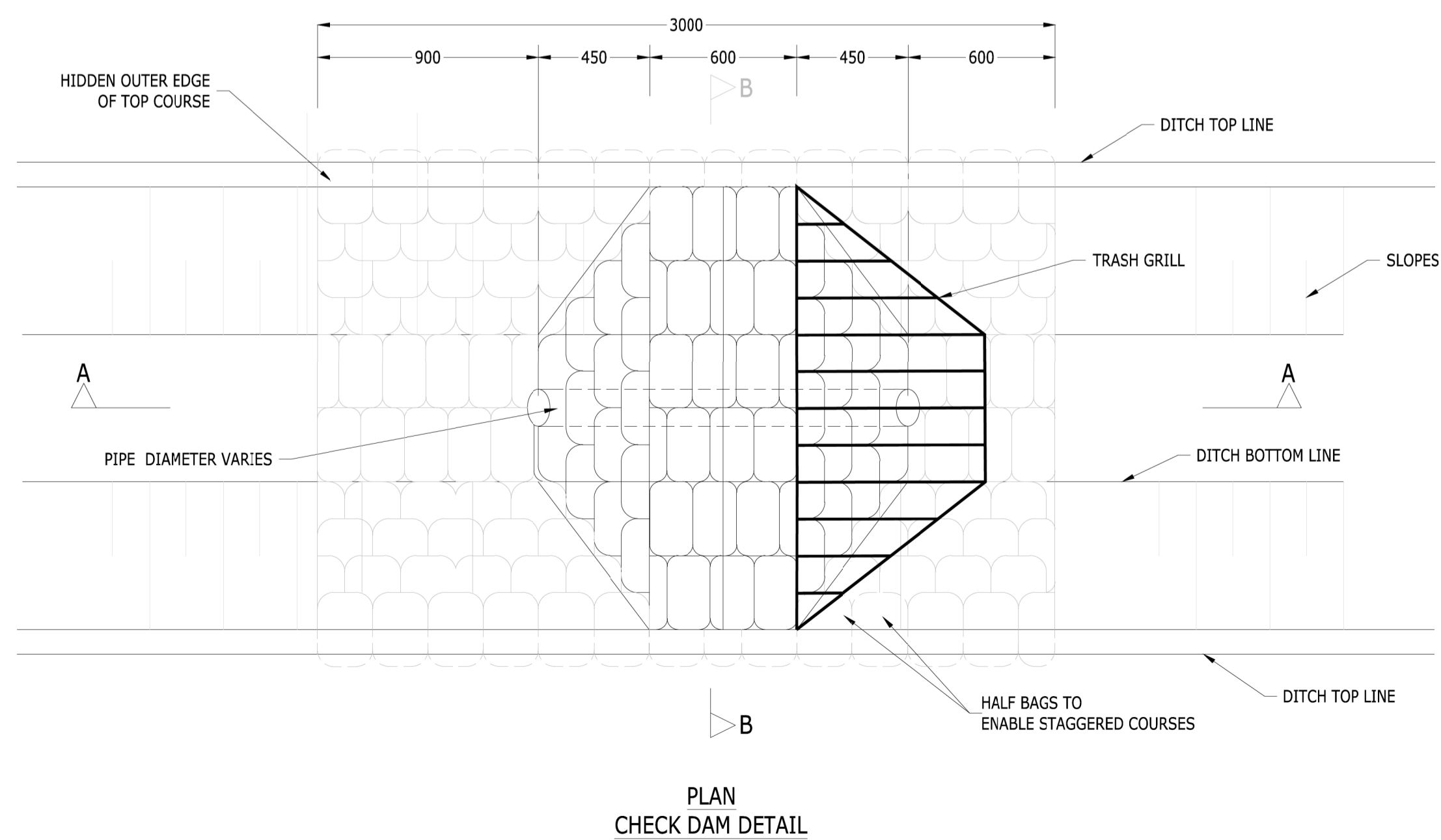
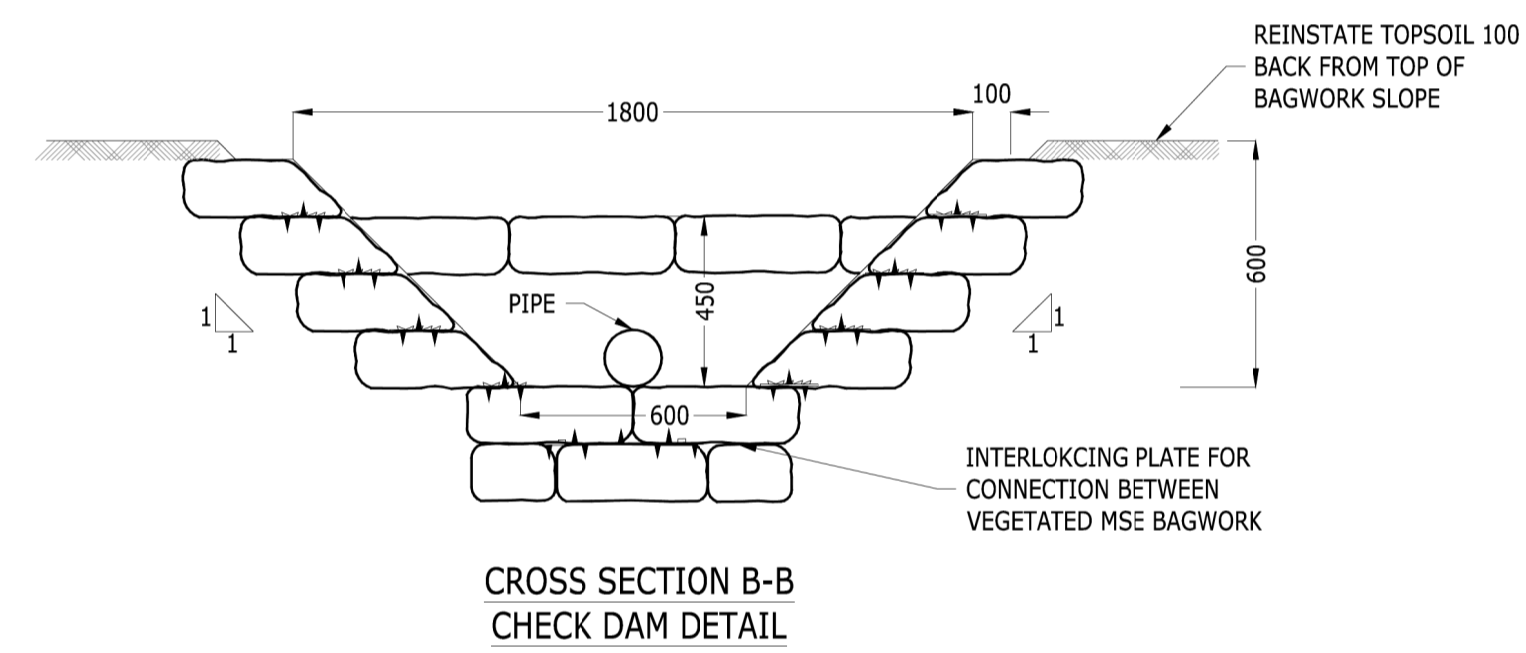
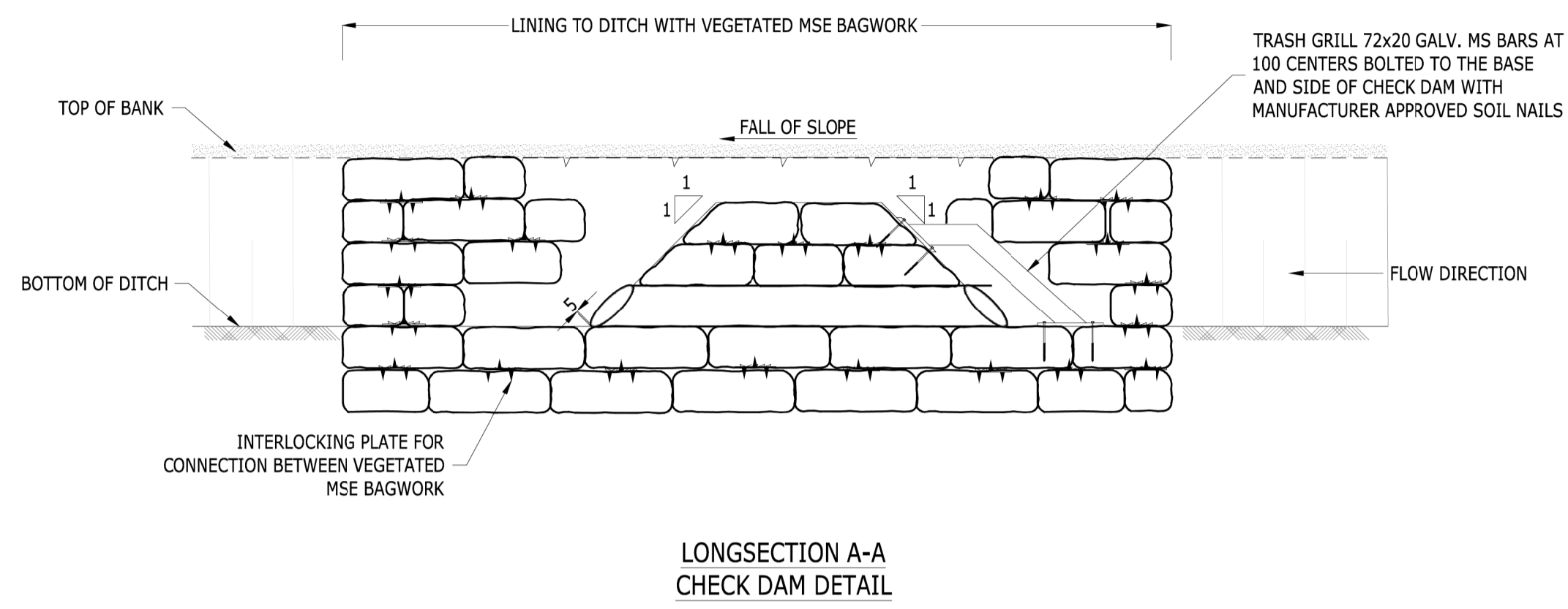


PRE-EARTHWORKS DITCH (PED) AND GENERAL DITCH DIMENSIONS, WIDTH x DEPTH



- Notes:
1. All dimensions are in millimetres unless otherwise stated.
  2. Mechanically stabilised earth (MSE) walls to use vegetated bagwork secured by interlocking plates with manufacturer approved fill laid in accordance to manufacturer's instructions.
  3. Please refer to 3.03.00 Environmental Statement Chapter 3: Description of Scheme for the Rochdale Envelope flexibility included within the design for the purposes of Environmental Impact Assessment.
  4. This drawing is for planning application purposes only, it is not a construction issue drawing.

Mapping reproduced by permission of Ordnance Survey on behalf of HMSO.  
© Crown copyright and database rights 2024 Ordnance Survey 100019340.

A1 - Authorised for Planning				
C01	AJ	KJ	SS	08/02/24
REVISION	DRAWN	CHECKED	APPROVED	DATE

CLIENT

**Norfolk County Council**  
Grahame Bygrave  
Interim Executive Director of Community and Environmental services  
Norfolk County Council  
County Hall, Martineau Lane  
Norwich NR1 2SG

PROJECT

Norwich Western Link

ferrovial construction  
**RAMBOLL**

DRAWING TITLE  
NORWICH WESTERN LINK  
DRAINAGE TYPICAL DETAILS  
SHEET 1 OF 6

DRAWING STATUS  
A1 - AUTHORISED FOR PLANNING

DRAWN AJ	CHECKED KJ	APPROVED SS	AUTHORISED FQC
SCALE @ A1 SIZE 1:20	DATE 08/02/24	REVISION C01	

DRAWING NUMBER  
PK1002-RAM-HDG-MLE-DE-DZ-0001